



**WALLTITE®**

**■ BASF**

We create chemistry

# **WALLTITE® Closed-Cell Spray Polyurethane Foam**

for Metal Building and Agricultural Applications



This information is offered by BASF as information for the use and application of spray polyurethane foam to metal buildings and agricultural applications. BASF does not take design responsibility nor does it assume liability for applications not following industry safety requirements as well as industry best practices as defined at [www.spraypolyurethane.org](http://www.spraypolyurethane.org).



WALLTITE® closed-cell spray polyurethane foam (SPF) insulation and air sealing materials are a versatile and economical option for insulating roofs, walls and storage tanks in the metal and agricultural building market.

BASF offers a selection of spray applied polyurethane foam systems and protective elastomeric coatings that provide a monolithic barrier to the elements. These systems can be installed quickly and have a proven performance record with nearly 40 years of service under some of the most extreme conditions.

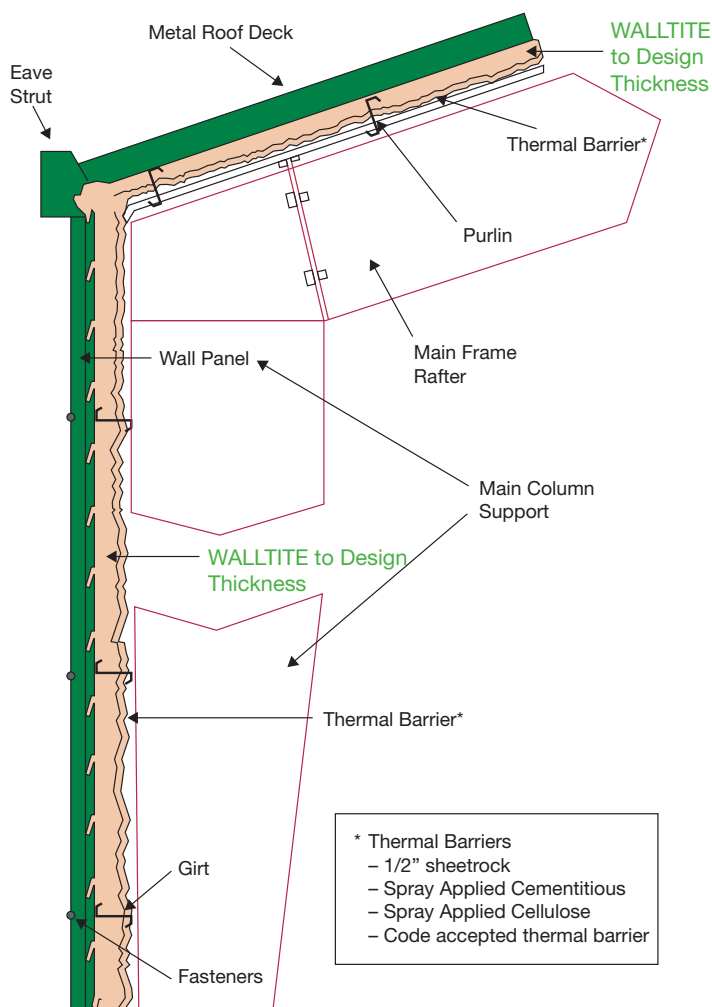
#### Features and Benefits Include:

- Fluid, seamless application that fully adheres to the surface to reduce moisture penetration
- Thermal efficiency for reduced energy costs
- Insulation R-value of 6.9-7.4 per inch
- Increased cost-effectiveness and reduced life cycle costs
- Extended farm equipment life due to decreased exposure to harsh weather conditions
- Reduced installation costs – conforms to round tanks and irregular roof/wall surfaces more effectively than traditional insulation systems
- Reduced maintenance requirements by controlling condensation potential
- Greater temperature consistency for livestock, improving quality of life, with increased food consumption, and decreased mortality among livestock





### Metal Construction Detail



Some of the agricultural applications for SPF include:

### Storage Tanks

- Most bulk materials storage in agricultural operations can use spray foam insulation to maintain proper temperature controls and help to reduce energy costs
- Unlike cut and fit insulations, spray foam provides a seamless, continuous insulation system which offers greater performance

### Metal Outbuildings

- Air impermeable spray foam insulation reduces air leakage through equipment & produce storage buildings, livestock facilities as well as coolers and freezers
- Superior insulating value combined with vapor resistance provide condensation control

### Exterior Roofing Retrofits

- The lifespan of irregular, corrugated metal roofs commonly found on barns, outbuildings and sheds can be extended with the use of SPF
- Without foam insulation, rubber grommets around screws that fasten the roof to the building begin to deteriorate, causing moisture to invade, resulting in corrosion, rusting and leaks



# Compare BASF technology with traditional insulation materials

Criteria	WALLTITE® Closed-Cell SPF	Glass Fiber	Board XPS (R-5.0)	Open-Cell Foam
R-value per inch <sup>1</sup>	6.8–7.4	3.4–3.7	5.0	3.7–4.1
Approved Air Barrier	1" thickness	No	No	3.5" thickness
Seamless Construction	Yes	No	No	Yes
Rigid	Yes	No	Yes	No
Fully Adhered	Yes	No	No	Yes
Adds Structural Strength	Yes	No	No	No
Long Service Life	Yes	No	No	Yes
Absorbs Water	No	Yes	No	Yes
Vapor Retarder Performance	Yes	No	Yes	No

<sup>1</sup> The R-value of this insulation. "R" means resistance to heat flow. The higher the R-value, the greater the insulating power. Compare insulation R-values before you buy. There are other factors to consider. The amount of insulation will depend upon the climate, the type and size of your house, and the fuel use patterns and family size. If you buy too much insulation it will cost you more than what you will save on fuel. To achieve proper R-values, it is essential that this insulation be installed properly.

\* Application to be completed by spray application professionals only, who are trained in the safe and proper applications of spray foam following BASF procedures and industry practices.

While the descriptions, designs, data and information contained herein are presented in good faith and believed to be accurate, they are provided for guidance only. Because many factors may affect processing or application/use, BASF recommends that the reader make tests to determine the suitability of a product for a particular purpose prior to use. No warranties of any kind, either expressed or implied, including warranties of merchantability or fitness for a particular purpose, are made regarding products described or designs, data or information set forth, or that the products, designs, data or information may be used without infringing the intellectual property rights of others. In no case shall the descriptions, information, data or designs provided be considered a part of the BASF terms and conditions of sale. Further, the descriptions, designs, data, and information furnished by BASF hereunder are given gratis and BASF assumes no obligation or liability for the description, designs, data or information given or results obtained, all such being given and accepted at the reader's risk.

WALLTITE® is a registered trademark of BASF Corporation.

1-888-900-FOAM

BASF Corporation  
1703 Crosspoint Avenue  
Houston, TX 77054  
Fax: 713-383-4592  
www.spf.basf.com  
spfinfo@basf.com

SS-CC-500-WT-Ag

© 2023 BASF Corporation

