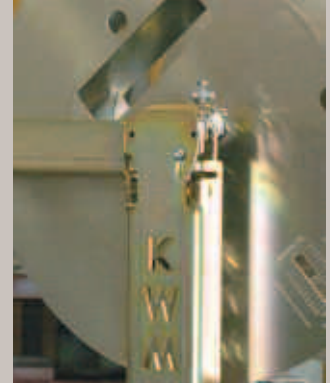




IRON MAN

5" Seamless Rollformer



New upright, tension brake, aluminum spool and coil scale

Polyurethane Drive Train

- Eliminates the need to load coil prior to transportation (less material waste)
- Rollform 24 gauge steel
- Eliminates slippage from cold weather and condensation

.002 Hard Chrome Plated Steel Forming Rollers

- Rollforms all recommended materials with minimal or no adjustment
- Free-floating forming rollers produce less pressure and allow for more product uniformity

Electrical and Control System

- Push button entry and exit end controls with safety wiring and "jog" feature
- 3/4 HP, 110 volt, single phase motor, 13.6 ampere

Structural Steel Frame

- Welded tubular frame

Modular Turnstile Upright System & Transfer Bars

- Transfer bars (ease of coil loading)

2 YEAR WARRANTY
ON PARTS & LABOR

KWM
Gutterman^{INC}

www.kwmgutterman.com
Toll-free (888) 729-4290



IRON MAN

5" Seamless Rollformer

Power

3/4 HP, 110 volt, single phase,
13.6 ampere, totally enclosed
fan cooled (T.E.F.C.) motor

Dimensions

Length – 98 1/2" (250.2 cm)
Height – 48" (122.0 cm)
Width – 24" (61.0 cm)

Weight

Approximately 1,100 lbs. (499.0 kg)

Drive

Powered polyurethane drive rollers
via chains and sprockets

Shear

Front pull guillotine

Speed

Approximately 35 feet per minute

Controls

Push button entry and exit end controls
with "jog" feature

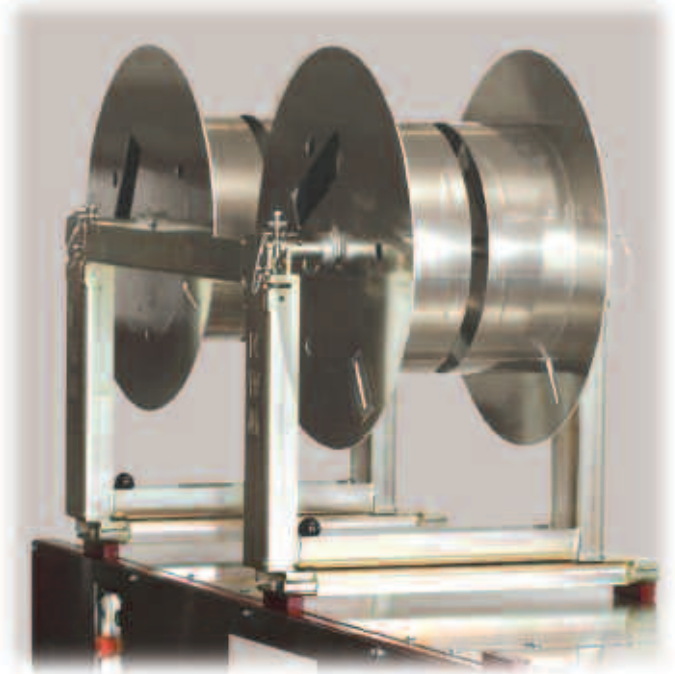
Recommended Materials

Maximum width 11 3/4" to 12 3/8"

Material	Maximum Gauge
Painted steel	24
Galvanized steel	24
Aluminized steel	24
Ternecoat steel	24
Aluminum	.032
Copper	16 oz.–20 oz. 3/4 hard

Options

- Machine mount cradles
- Additional runout support stands
- CE Certified wiring
- Additional turnstiles
- Additional spools
- Alcoa style hook
- 12 volt, DC power
- Box gutter
- Roof flange 1"
- Trailer riser pad



Quick release turnstile and transfer bars

 **KWM**[®]
Gutterman^{INC.}

795 South Larkin Avenue
Rockdale, Illinois 60436

Phone (815) 725-9205 • Fax (815) 725-4429

Toll-free (888) 729-4290

E-mail sales@kwmgutterman.com

www.kwmgutterman.com